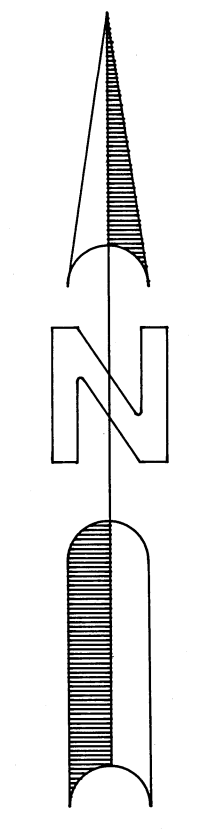


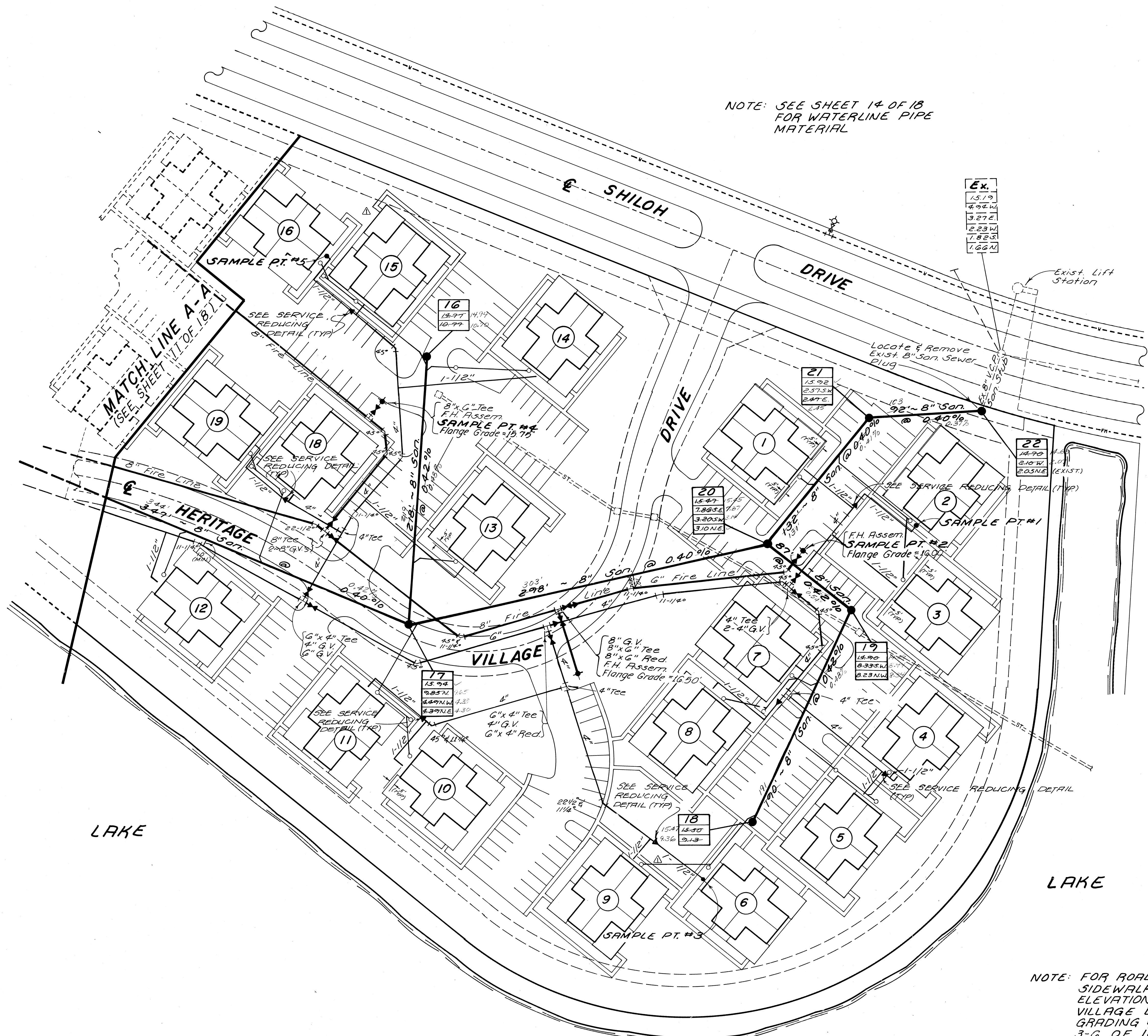
REVISIONS	DATE	BY	CHK'D
Rev. 08/11/87 to 4"	9-19-80	LM	
Added Flange Grade	10-23-80	PH	
As-Built Sanitary	1/19/87	TRK	
Rev. Sidewalk per Client	3/11/87	KCC	

SCALE: 1"=40'
DATE: SEPT., 1986
BY: Mary
CHK'D: [Signature]
F.B. PG.
JOB NO: 86-168

LAWSON, NOBLE & ASSOCIATES, INC.
 ENGINEERS PLANNERS TESTING SURVEYORS
 1501 CORPORATE DRIVE SUITE 150
 BOYNTON BEACH, FLORIDA 33435 PH. (305) 736-9944

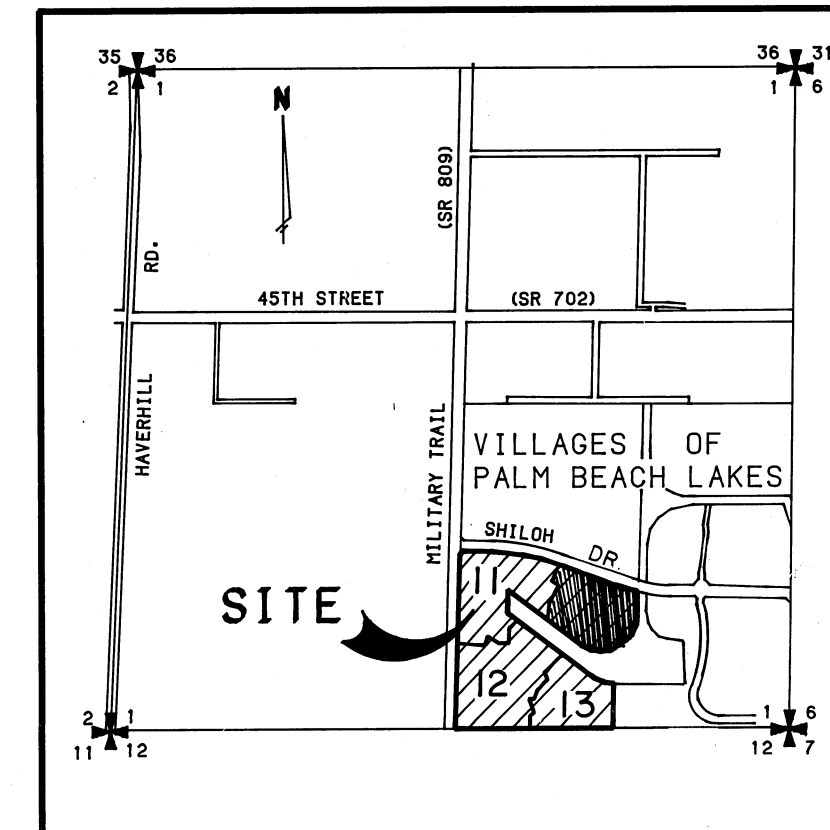


NOTE: SEE SHEET 14 OF 18 FOR WATERLINE PIPE MATERIAL



LEGEND

- WATER MAIN WITH FIRE HYDRANT AND GATE VALVE
- WATER MAIN WITH BENDS
- CONSTRUCT WATER MAIN UNDER SANITARY SEWER MAIN. WATER MAIN OR STORM SEWER. THE ABSENCE OF THIS SYMBOL MEANS TO CONSTRUCT OVER.
- SANITARY SEWER LINE WITH MANHOLE AND NUMBER
- EX. SANITARY SEWER LINE WITH MANHOLE
- STORM SEWER WITH CATCH BASIN
- PVC SANITARY SEWAGE SERVICE W/ CLEANOUT
- 4" DIP WATER SERVICE W/ 3" METER
- EXISTING WATER MAIN
- EXISTING GRAVITY SANITARY SEWER
- EXISTING FORCE MAIN
- TYPICAL BUILDING NO.
- SAMPLE POINT



LOCATION MAP SECTION 1-43S-42E

NOTE: FOR ROADWAY, CURBING & SIDEWALK LOCATIONS & ELEVATIONS ON HERITAGE VILLAGE DRIVE, SEE PAVING, GRADING & DRAINAGE SHEETS 3-6 OF 18