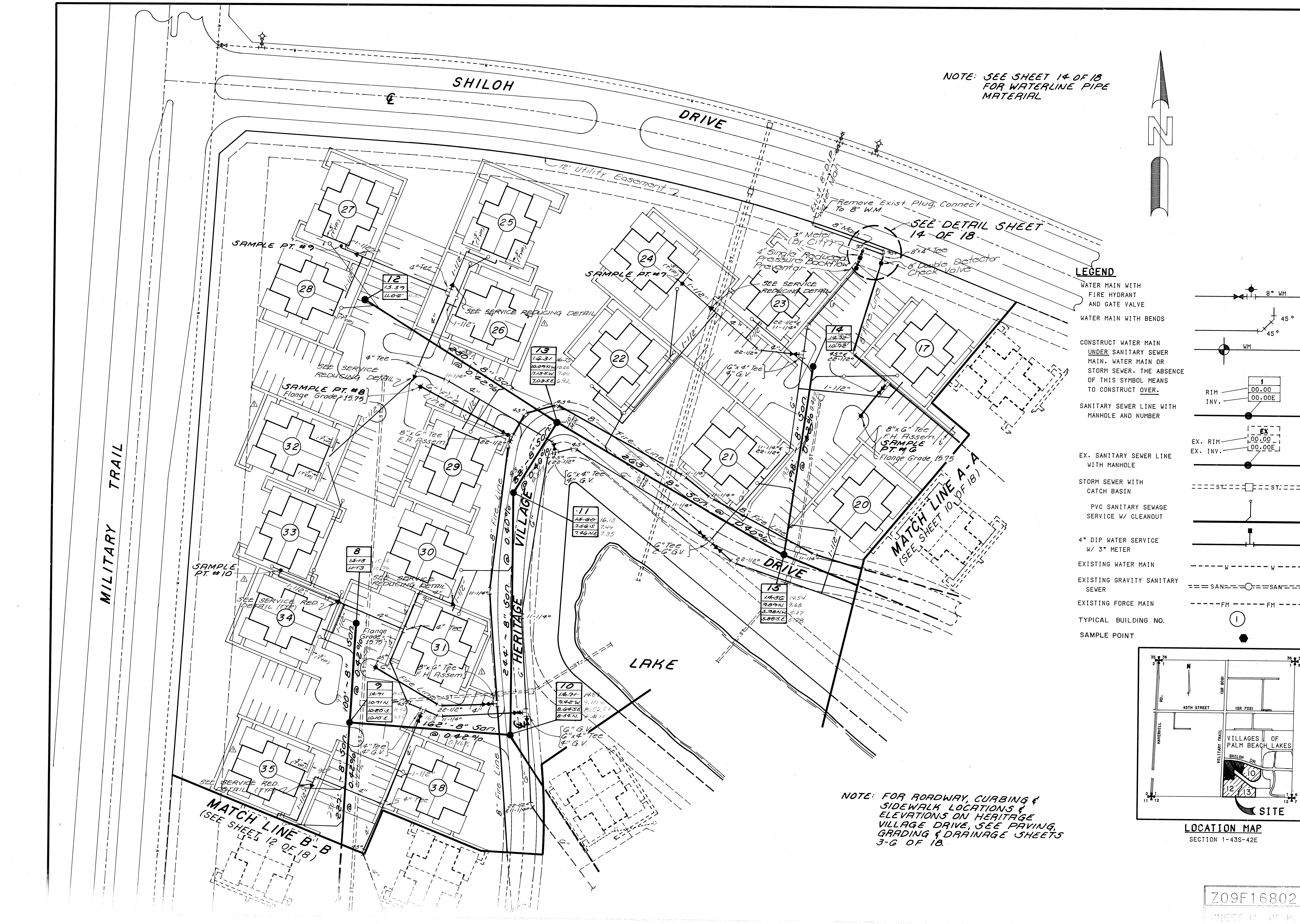


REVISIONS	DATE	BY	CHK'D
Rev. 2 1/2" W.M. to 4"	9-29-86	LJK	
Rev. For City of W.P.B. Added Flange Grade	10-1-86	TS	
As-Built Sanitary Sewer	10-23-86	PH	
Rev. Sidewalk Per Client	11/17/87	PHK	

SCALE	DATE	BY	CHK'D
1"=40'	SEPT. 1986	Mary	
		PG.	

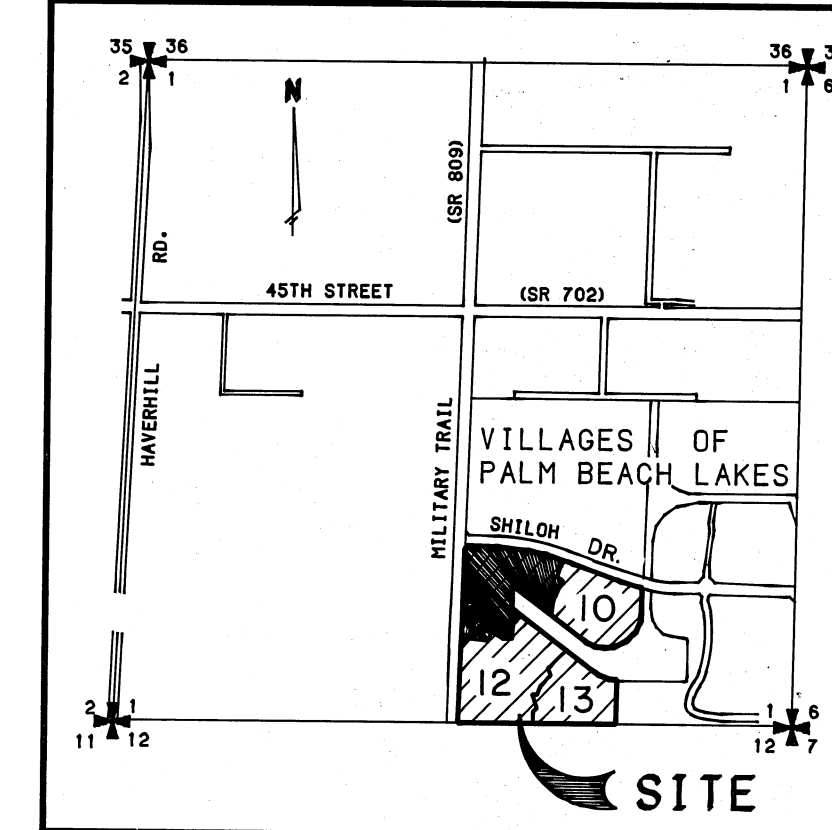
LAWSON, NOBLE & ASSOCIATES, INC.
 ENGINEERS PLANNERS TESTING SURVEYORS
 1501 CORPORATE DRIVE SUITE 150
 BOYNTON BEACH, FLORIDA 33435 PH (305) 736-9944

NOTE: SEE SHEET 14 OF 18 FOR WATERLINE PIPE MATERIAL



LEGEND

- WATER MAIN WITH FIRE HYDRANT AND GATE VALVE
- WATER MAIN WITH BENDS
- CONSTRUCT WATER MAIN UNDER SANITARY SEWER MAIN, WATER MAIN OR STORM SEWER, THE ABSENCE OF THIS SYMBOL MEANS TO CONSTRUCT OVER.
- SANITARY SEWER LINE WITH MANHOLE AND NUMBER
- EX. SANITARY SEWER LINE WITH MANHOLE
- STORM SEWER WITH CATCH BASIN
- PVC SANITARY SEWAGE SERVICE W/ CLEANOUT
- 4" DIP WATER SERVICE W/ 3" METER
- EXISTING WATER MAIN
- EXISTING GRAVITY SANITARY SEWER
- EXISTING FORCE MAIN
- TYPICAL BUILDING NO.
- SAMPLE POINT



LOCATION MAP SECTION 1-43S-42E

NOTE: FOR ROADWAY, CURBING & SIDEWALK LOCATIONS & ELEVATIONS ON HERITAGE VILLAGE DRIVE, SEE PAVING, GRADING & DRAINAGE SHEETS 3-G OF 18.

Z09F16802